




Durable Beauty

HardiePlank®





HardiePlank® VL





Contents

- 06 Durable Beauty
- 08 Introducing the HardiePlank® family
- 10 Create interest with installation styles
- 12 Choose long-lasting colour
- 14 The finishing touch
- 16 Design flexibility
- 20 Home renovations
- 24 Future-proof your home
- 26 Information and inspiration

Durable Beauty

If you're looking for a versatile, low maintenance weatherboard with a natural and beautiful texture, look no further than **JamesHardie®** fibre cement weatherboards. It's the facade of choice for builders, architects and homeowners alike, protecting and beautifying millions of homes worldwide.

- Most natural look according to 90% of homeowners¹
- Low maintenance thanks to unique ColourPlus™ Technology²
- Up to 20% faster installation³



¹ Based on feedback of more than 800 respondents

² ColourPlus™ Technology finishes have been evaluated in tests simulating decades of UV exposure and show exceptional resistance to colour change

³ Based on side to side installation with comparable systems





HardiePlank® VL



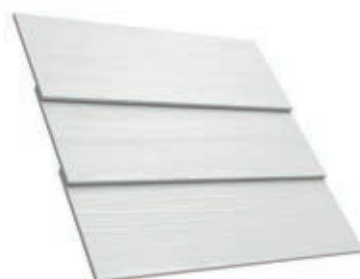
Introducing the HardiePlank® family

HardiePlank® family includes two weatherboard profiles, made from advanced material fibre cement. With an A2, s1 d0 fire rating, our boards are non-combustible and offer the best fire protection possible for any coloured facade board.

HardiePlank® Weatherboard



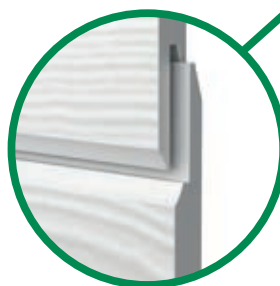
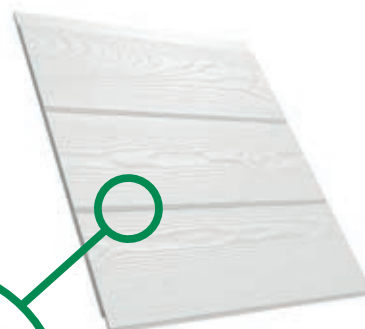
Dimensions: 3600 x 180 x 8mm
Weight per piece: 7.4kg
Pieces per m²: 1.85
Visible surface: 150 - 180mm
Colours: 21
Textures: Cedar and Smooth



HardiePlank® VL Weatherboard



Dimensions: 3600 x 214 x 11mm
Weight per piece: 10.5kg
Pieces per m²: 1.52
Visible surface: 182mm
Colours: 6
Textures: Cedar



BBA Certified

JamesHardie® cladding has been assessed by the British Board of Agrément and has been awarded BBA certificate number 04/4147.

Innovative interlocking system

HardiePlank® VL weatherboard offers hidden fixing, thanks to its innovative tongue and groove system that does not require any additional accessories for fixing.

Create interest with installation styles

Installation is quick and easy, offering maximum flexibility with options to fit our boards horizontally, vertically, ship-lapped or open jointed.

HardiePlank® weatherboard

Create a classic finish with HardiePlank® weatherboard in horizontal lap, vertical hit and miss or open joint styles.



HardiePlank® weatherboard
vertical hit and miss



HardiePlank® weatherboard
horizontal overlap

HardiePlank® VL weatherboard

The seamless interlock of HardiePlank® VL cladding epitomises architectural modern design perfect for both horizontal and vertical installation. The clip-less system is 20% faster to install than comparable interlock solutions.



HardiePlank® VL weatherboard
horizontal installation



HardiePlank® VL weatherboard
vertical installation



Choose long-lasting colour

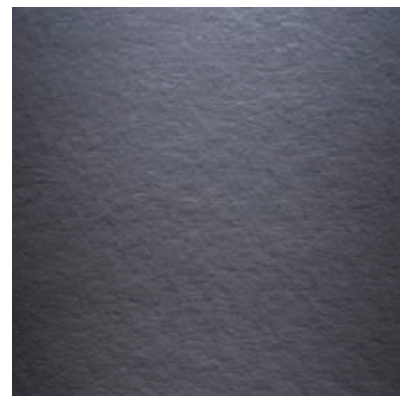
The James Hardie **HardiePlank**[®] family is available in two textures and a variety of vibrant colours using **ColourPlus**[™] Technology - specifically formulated to give you a long-lasting and low maintenance, consistent finish for years to come.

- 21 colours for **HardiePlank**[®] weatherboards
- 6 colours for **HardiePlank**[®] VL cladding
- Unique **ColourPlus**[™] Technology finishes

Textures



Cedar



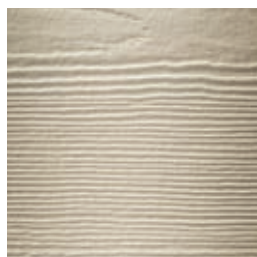
Smooth

Colours

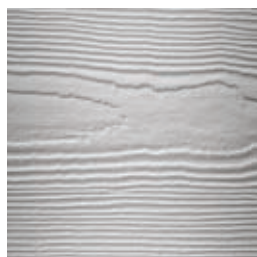
■ HardiePlank® weatherboard ● HardiePlank® VL weatherboard



Arctic White ■ ●



Sail Cloth ■ ●



Light Mist ■ ●



Grey Slate ■ ●



Anthracite Grey ■ ●



Midnight Black ■ ●



Cobble Stone ■



Woodland Cream ■



Soft Green ■



Pearl Grey ■



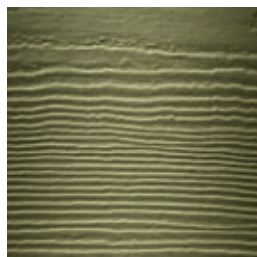
Monterey Taupe ■



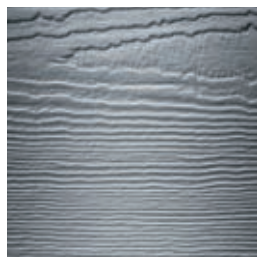
Khaki Brown ■



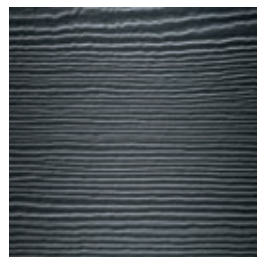
Heathered Moss ■



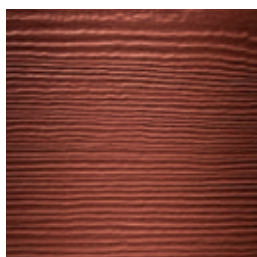
Mountain Sage ■



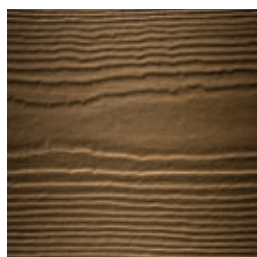
Boothbay Blue ■



Evening Blue ■



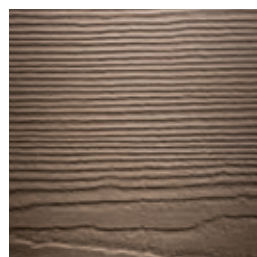
Traditional Red ■



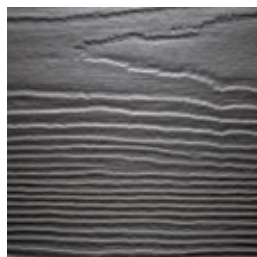
Chestnut Brown ■



Timber Bark ■



Rich Espresso ■



Iron Grey ■

Our colour palette has been developed with leading industry experts and is bespoke to James Hardie cladding products.



The finishing touch

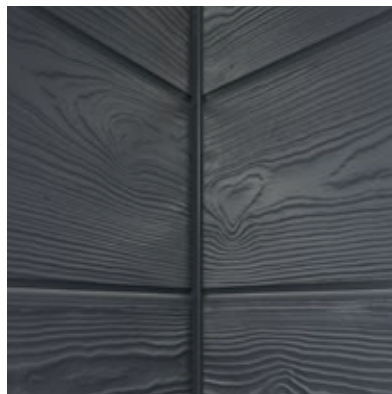
Trim is that final touch that completes your home's design. Accentuate corners, columns, doors, windows and more with our James Hardie complementary trims.



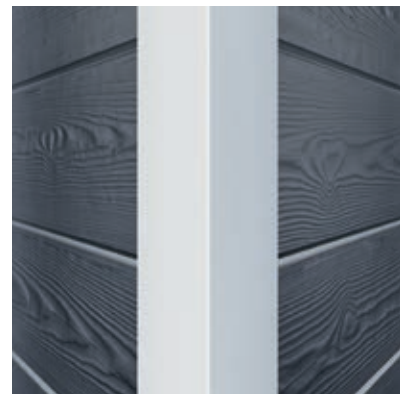
HardieTrim™ NT3™ fibre cement profile
for exterior corners:
Dimensions: 3655 x 90/140 x 25mm



HardiePlank™ MetalTrim™ profile
for exterior corners:
Length: 3000mm



HardiePlank™ MetalTrim™ profile
for interior corners:
Length: 3000mm



HardiePlank™ VL 2-Part profile
for exterior corners:
Length: 3000mm

Design flexibility





HardiePlank® lap weatherboards combined with brick - Colour: Khaki Brown



HardiePlank® weatherboards in a combination of vertical hit and miss and horizontal overlap look - Colours: Boothbay Blue and Arctic White





HardiePlank® VL cladding installed horizontally - Colour: Arctic White



HardiePlank® VL cladding installed horizontally - Colour: Arctic White

Home renovations

This stunning refurbishment saw an extension and new build garage block transformed with render and Soft Green **HardiePlank**[®] weatherboard, brought together to create an elegant countryside retreat.

The property, located near Galleywood Common in Chelmsford, was originally a self-build home constructed in the 1960s. Over time, the house aged badly and the owners decided a full refurbishment was due.



Before

Hyland Homes was commissioned to overhaul the property through construction of a large extension and detached garage block. The end result is a complete transformation into what is now a highly desirable, classically designed home.



After

” **HardiePlank®** is our ‘go to’ recommendation for any homeowner wanting a classic facade that endures.

Premium Stockist



” Mixing traditional with modern was key to our design and so we quickly switched to **HardiePlank® VL** for the crisp, clean lines to contrast with the exposed stone.

Private Homeowner



Traditional home in Harrogate was extended at the rear with a new double-storey extension and contrasting tongue and groove **HardiePlank® VL** weatherboard on the upper level.

The homeowner chose **HardiePlank® VL** boards for its fresh, symmetrical look and low maintenance properties.

Here Anthracite Grey in cedar complements the local stone to offer a strong contrast. The end result is a striking renovation that beautifully captures the character of the home's local heritage.





With a typical-sized UK garden, the homeowners were looking to expand their outdoor living space with a new build garden room that complemented their home.

The new garden room is just the right amount of modern styling, while still obtaining a casual, approachable look. The homeowners opted for a full-wrap of **HardiePlank® VL** weatherboard.

Anthracite Grey from our **ColourPlus™** Technology range was chosen for a high quality, consistent finish.





Information



+ Inspiration

Further product information
and solutions

JAMESHARDIE.CO.UK

Follow us on Instagram for
more inspiration

[@jameshardieeurope](https://www.instagram.com/jameshardieeurope)

With our online colour
visualizer tool, you are one
step closer to making your
exterior design a reality.

Try it here:

DESIGN.JAMESHARDIE.CO.UK

You will find the latest version of this brochure in digital form on our website. Technical modifications subject to changes. Should you require additional information, please contact our customer service. All our products with ColourPlus™ Technology come with a 15 year warranty. More detailed information can be found on our website. Last updated 02/2021.

© 2021 James Hardie Europe GmbH. ™ and ® denote registered and unregistered trademarks of James Hardie Technology Limited and James Hardie Europe GmbH.

**HardiePlank® Family
Personalised
Sample Box**

Scan the code to order samples directly to your home.



**HardiePlank® VL
Installation Video**

Scan the code to watch the step-by-step installation video.



James Hardie Building Products Ltd

7 The Priory
Old London Road
Canwell
Sutton Coldfield
B75 5SH

Contact information:

Tel: 0121 311 3480
Email: info@jameshardie.co.uk
www.jameshardie.co.uk

har-200-00017

